

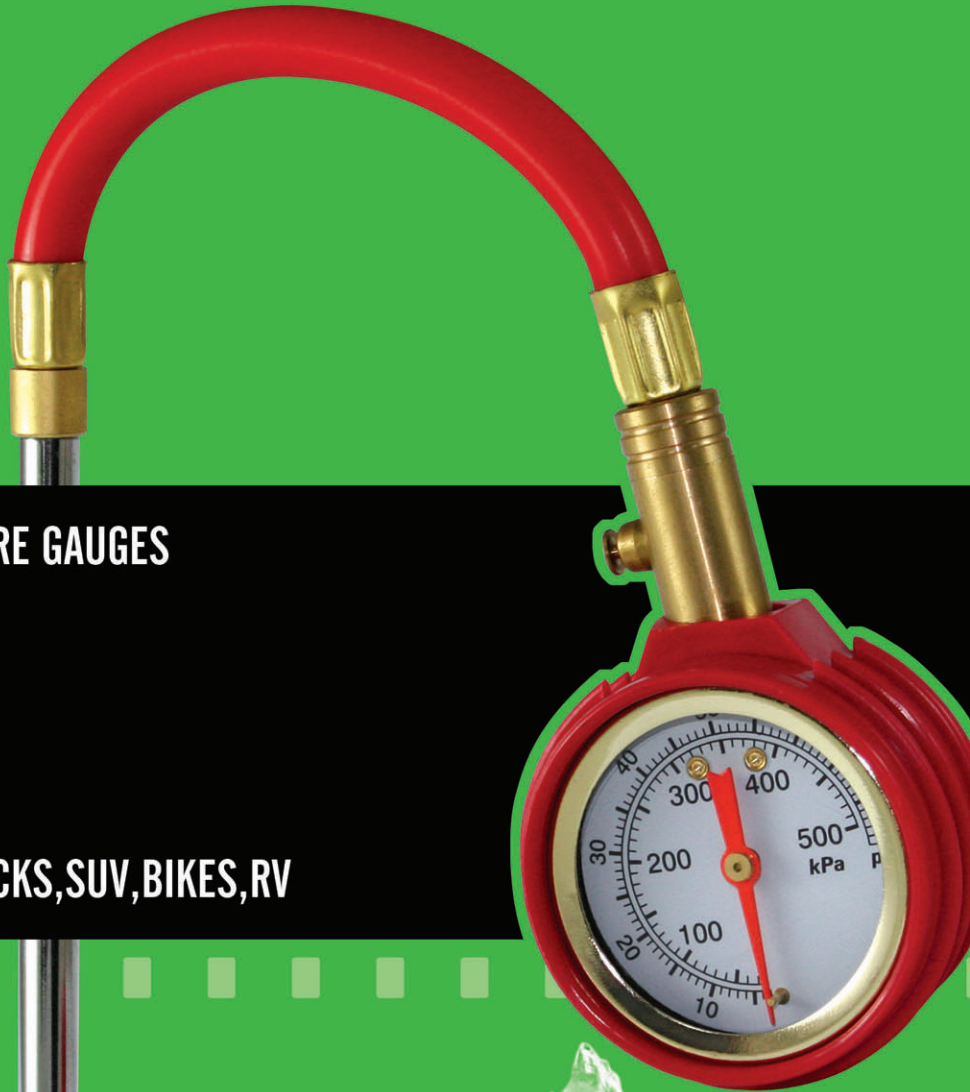
GOOD-SAGE

RISING INSTRUMENT CO., LTD.

TIRE PRESSURE GAUGES AND INFLATORS

2009
EDITION

- ▶ **PRECISION TIRE PRESSURE GAUGES**
- ▶ **GET BETTER HANDLING**
- ▶ **STAYS ACCURATE**
- ▶ **INCREASE TIRE LIFE**
- ▶ **SAVE GAS**
- ▶ **SUITABLE FOR CARS, TRUCKS, SUV, BIKES, RV**





We specialized in making tire pressure gauge parts since 1982 and making precision tire pressure gauges and inflators since 2000 for strict customers from USA, Japan.

All of our dial tire gauges are made according to ANSI B40.1 Grade B accuracy standard, with 100% tested and approved.

Our tire pressure gauges are widely used for passenger vehicles, cars, trucks, SUV, RV, bicycles.

As an ISO9001 certified manufacturer, we look quality as the life of enterprise, we will adhere to the philosophy "Quality foremost, Credit foremost" to serve all of our customers. OEM orders are welcome.

We now present our new 2009 edition catalogue for your easy and quick selections.

Contact us now at .





1.TIRE INFLATOR GAUGES.....1-2



◀ **INDEX** ▶

2.DIAL TIRE PRESSURE GAUGES.....3-8

3.DIAL TIRE PRESSURE GAUGES WITH HOSE.....9-14

4.PEN TIRE PRESSURE GAUGES.....15-17

6.ACCESSORIES.....21-23



5.DIGITAL TIRE PRESSURE GAUGES.....18-20



◀ TIRE INFLATOR GAUGES



20TIG1 A/B/C/D

Dial: 2"
Steel case and chrome plated ring, acrylic window
Smooth black rubber boot
Chrome-plated zinc body, brass internal components
Two position lever for gauging and inflating operation,
Bleeding valve for deflation
Large, easy-to-read 270° dial face ensures a precise pressure reading.
1/4" F-NPT inlet connection
Calibrated 0-160 lbs. in two pounds increments.
Flexible rubber hose, 12" length, customs length on request
End: Heavy duty extended length zinc alloy dual foot chuck (20TIG1D)
Option: Heavy duty zinc alloy dual foot chuck with hook (20TIG1A)
Heavy duty zinc alloy dual foot chuck (20TIG1B)
Long rubber hose with clip on chuck (20TIG1C)
Suitable for any passenger vehicles, cars, truck, SUV, etc



25TIG1 A/B/C/D

Dial: 2.5"
Steel case and ring, acrylic window, Smooth black rubber boot, brass internal and connection
Large, easy-to-read 270° dial face ensures a precise pressure reading
Grip handle valve inflates or bleeds air to desired pressure, Flexible 360 degrees swivel rubber hose
Range: 0-60 psi, 0-100 psi, 0-160 psi, available for bar, kg/cm², kpa etc
Accuracy: 1.6%
1/4" F-NPT inlet connection
End: Heavy duty zinc alloy dual foot chuck (25TIG1B)
Option: Heavy duty zinc alloy dual foot chuck with hook (25TIG1A)
Long rubber hose with clip on chuck (25TIG1C)
Heavy duty extended length zinc alloy dual foot chuck (25TIG1D)
Suitable for any passenger vehicles, cars, truck, SUV, etc



25TIG2 A/B/C/D

Dial: 2.5"
ABS case and snap on acrylic window, gear type rubber boot, brass internal and connection,
Large, easy-to-read 270° dial face ensures a precise pressure reading
Grip handle valve inflates air to desired pressure, Flexible 360 degrees swivel hose, bleeding valve for deflation
Range: 0-60 psi, 0-100 psi, 0-160 psi, available for bar, kg/cm², kpa etc
Accuracy: 1.6%
1/4" F-NPT inlet connection
End: Long rubber hose with clip on chuck (25TIG2C)
Option: Heavy duty zinc alloy dual foot chuck with hook (25TIG2A)
Heavy duty zinc alloy dual foot chuck (25TIG2B)
Heavy duty extended length zinc alloy dual foot chuck (25TIG2D)
Suitable for any passenger vehicles, cars, truck, SUV, etc



PTIG1 A/B/C/D

Two position lever for gauging and inflating operation,
Bleeding valve for deflation
Triangular shape durable metal indicator bar for easy viewing
Chrome plated zinc alloy body, brass internal components
1/4" F-NPT inlet connection
Calibrated 10-120 lbs. in two pounds increments, accuracy +/-3psi
Flexible rubber hose, 12" length, customs length on request
End: Heavy duty zinc alloy dual foot chuck with hook (PTIG1A)
Option: Heavy duty zinc alloy dual foot chuck (PTIG1B)
Long rubber hose with clip on chuck (PTIG1C)
Heavy duty extended length zinc alloy dual foot chuck (PTIG1D)
Suitable for any passenger vehicles, cars, truck, SUV, etc





TIRE INFLATOR GAUGES



DTIG1

LCD Digital Tire Inflator

Features:

Tire Inflation/Deflation/Pressure Test

Unique, Comfortable Plastic Handle, Designed for Human Hand

Structure:

LCD Digital Display.

Auto shut off

Automatic Zero-return and Emendation

Adopts the pressure sensor with high accuracy, made by American Novasensor.

Keeps the veracity of tire inflation and driving safety

Using life lasts more than 50000 times

Technical Data:

Vehicle Available: Motorcycle, Cars, Vans and Light Trucks

Power Supply: 3 V (1.5 V × 2)

Working Temp.: -18C° ~ +40C°

Testing Range: 0.4-6.8 kg/cm², 5-100 psi

Differentiation: 0.05 kg/cm²

Breaking Pressure: > 9.99 kg/cm²/ >150 psi

Accuracy: ±1% + 0.5 psi

Display Mode: 22 × 13 (mm) LCD Digital Display

Dimension: 280 × 74 × 71 (mm)



DTIG2

LCD Digital Tire Inflator

Features:

Tire Inflation/Deflation/Pressure Test

Unique, Comfortable Plastic Handle, Designed for Human Hand

Structure:

LCD Digital Display.

Auto shut off

Automatic Zero-return and Emendation

Adopts the pressure sensor with high accuracy, made by American Novasensor.

Keeps the veracity of tire inflation and driving safety



A

B

C

D

We supply 4 end chuck designs for all tire inflator gauges for option

Type A: Heavy duty zinc alloy dual foot chuck with hook

Type B: Heavy duty zinc alloy dual foot chuck

Type C: Long rubber hose with clip on chuck

Type D: Heavy duty extended length zinc alloy dual foot chuck





DIAL TIRE PRESSURE GAUEGS



DIAL TIRE PRESSURE GAUGES

Dial tire pressure gauges are designed with full geared, solid brass precision movement with bronze bourdon tube. Unlike piston-plunger-type gauges, the bourdon tube and movement is not affected by changes in temperature, humidity or altitude. These gauges are designed with pressure from 0-15psi up to 160psi for all kinds of vehicles.



15S60

Mini Dial tire pressure gauge
Dial: 1.5"
Steel case and ring, acrylic window, straight chuck
Range: 0-60psi, 0-100psi, 0-160psi, available for bar, kg/cm² , kpa etc
Case color option: blue, red, green, purple, orange, black, yellow, silver
Accuracy: ANSI B40.1 Grade B
Suitable for any passenger vehicles.



15SB60

Mini Dial tire pressure gauge
Dial: 1.5"
Steel case and ring, acrylic window, straight chuck, pressure holding-bleeding button
Range: 0-60psi, 0-100psi, 0-160psi, available for bar, kg/cm² , kpa etc
Case color option: blue, red, green, purple, orange, black, yellow, silver
Accuracy: ANSI B40.1 Grade B
Suitable for any passenger vehicles.



15S60G 15SBR60G 15SB60G

With gear style rubber gauge protector



15SBR60

Mini Dial tire pressure gauge
Dial: 1.5"
Steel case and ring, acrylic window, straight chuck, pressure holding-bleeding button, 360° swivel angle chunk
Range: 0-60psi, 0-100psi, 0-160psi, available for bar, kg/cm² , kpa etc
Case color option: blue, red, green, purple, orange, black, yellow, silver
Accuracy: ANSI B40.1 Grade B
Suitable for any passenger vehicles.





DIAL TIRE PRESSURE GAUGES ▶



15S60 in display box



15SB60 in display box



15BR60 in display box



15SA60G

Mini Dial bicycle tire pressure gauge

Dial: 1.5"

Steel case and ring, acrylic window, straight chuck, pressure holding-bleeding button

Schrader valve or presta valve

Range: 0-60psi, 0-100psi, 0-160psi, available for bar, kg/cm², kpa etc

Black rubber gauge protector

Accuracy: ANSI B40.1 Grade B

Suitable for bicycle tire

◀ DIAL TIRE PRESSURE GAUGES



20S100

Dial tire pressure gauge

Dial: 2"

Steel case and ring, acrylic window, straight chuck

Range: 0-60psi, 0-100psi, 0-160psi, available for bar, kg/cm², kpa etc

Case color option: blue, red, black, silver, gold

Ring color option: gold, silver

Accuracy: ANSI B40.1 Grade B

Suitable for any passenger vehicles.



20SB60

Dial tire pressure gauge

Dial: 2"

Steel case and ring, acrylic window, straight chuck,

pressure holding-bleeding button

Range: 0-60psi, 0-100psi, 0-160psi, available for bar, kg/cm², kpa etc

Case color option: blue, red, black, silver, gold

Ring color option: gold, silver

Accuracy: ANSI B40.1 Grade B

Suitable for any passenger vehicles.



20SR60

Dial tire pressure gauge

Dial: 2"

Steel case and ring, acrylic window, 360° swivel angle chuck

Range: 0-60psi, 0-100psi, 0-160psi, available for bar, kg/cm², kpa etc

Case color option: blue, red, black, silver, gold

Ring color option: gold, silver

Accuracy: ANSI B40.1 Grade B

Suitable for any passenger vehicles.



20SBR60

Dial tire pressure gauge

Dial: 2"

Steel case and ring, acrylic window, pressure holding-bleeding button,

360° swivel angle chuck

Range: 0-15psi, 0-30psi, 0-60psi, 0-100psi, 0-160psi, available for bar, kg/cm², kpa etc

Case color option: blue, red, black, silver, gold

Ring color option: gold, silver

Accuracy: ANSI B40.1 Grade B

Suitable for any passenger vehicles.





DIAL TIRE PRESSURE GAUGES



20SBRE60

Dial tire pressure gauge
Dial: 2"
Steel case and ring, acrylic window, pressure holding-bleeding button, 360° swivel angle thin type chuck
Range: 0-15psi, 0-30psi, 0-60psi, 0-100psi, 0-160psi, available for bar, kg/cm², kpa etc
Case color option: blue, red, black, silver, gold
Ring color option: gold, silver
Accuracy: ANSI B40.1 Grade B
Suitable for any passenger vehicles.



20SBRH60

Dial tire pressure gauge
Dial: 2"
Steel case and ring, acrylic window, pressure holding-bleeding button, 360° swivel angle chuck
Range: 0-15psi, 0-30psi, 0-60psi, 0-100psi, 0-160psi, available for bar, kg/cm², kpa etc
Case color option: blue, red, black, silver, gold
Ring color option: gold, silver
Accuracy: ANSI B40.1 Grade B
Suitable for any passenger vehicles.



G

S

R

B

2" gauges are available with the following rubber gauges protectors
G: Gear style rubber gauge protector
S: Smooth rubber gauge protector
R: Red rugged rubber gauge protector
B: Black rugged rubber gauge protector



◀ DIAL TIRE PRESSURE GAUGES



25SB170G

25SR170G

25SBR170G

Dial tire pressure gauge

Dial: 2.5"

Case: black ABC case

Window: snap on clear acrylic

Model: 25SB170G straight chunk, pressure holding-bleeding button

Model: 25SR170G 360° swivel angle chuck

Model: 25SBR170G pressure holding-bleeding button , 360° swivel angle chuck

Range: 0-60psi, 0-100psi, 0-160psi, 0-170psi, available for bar, kg/cm², kpa etc

Accuracy: ANSI B40.1 Grade B

Suitable for any passenger vehicles.



25SB60S

25SBR60S

Dial tire pressure gauge

Dial: 2.5"

Black steel case and bezel, plastic window

Model: 25SB60S Straight chuck, pressure holding-bleeding button

Model: 25SBR60S Straight chuck, pressure holding-bleeding button, 360° swivel angle chuck

Range: 0-60psi, 100psi, 160psi, available for bar, kg/cm², kpa etc

Accuracy: ANSI B40.1 Grade B

With Smooth black gauge protector

Suitable for any passenger vehicles





DIAL TIRE PRESSURE GAUGES



25SBR90

Dial tire pressure gauge
Dial: 2.5"
Case: black ABC case
Window: snap in clear acrylic, pressure holding-bleeding button, 360° swivel angle chuck, brass inside and connection
Range: 0-60psi, 0-90psi, 0-100psi, 0-170psi, available for bar, kg/cm², kpa etc
Accuracy: ANSI B40.1 Grade B
Suitable for any passenger vehicles.



20ST100

Simple style dial pressure gauge
Dial: 2"
Black ABC case and chuck, acrylic window, pressure holding button
Range: 10-50psi, 10-100psi, available for bar, kg/cm², kpa etc
Accuracy: ANSI B40.1 Grade C
Suitable for passenger vehicles.



20ST1200

Simple style dial pressure gauge
Dial: 2"
Black ABC case and chuck, acrylic window, pressure holding button
Range: 10-75psi, available for bar, kg/cm², kpa etc
Accuracy: ANSI B40.1 Grade C
Suitable for any passenger vehicles



20ST300

Simple style dial pressure gauge
Dial: 2"
Zinc alloy case and chuck, chrome plated ring, acrylic window, pressure holding button
Range: 10-60psi, 10-100psi, 10-150psi, available for bar, kg/cm², kpa etc
Accuracy: ANSI B40.1 Grade C
Suitable for passenger vehicles



◀ DIAL TIRE PRESSURE GAUGES WITH HOSE



◀ 20H160S

Dial tire pressure gauge with hose

Dial: 2"

Steel case and ring, acrylic window, straight chuck, flexible hose

Range: 0-15psi, 0-30psi, 0-60psi, 0-100psi, 0-160psi, available for bar, kg/cm², kpa etc

Accuracy: ANSI B40.1 Grade B

Smooth rubber gauge protector

Suitable for any passenger vehicles.



◀ 20HB100

Dial tire pressure gauge with hose

Dial: 2"

Steel case and ring, acrylic window, straight chuck, pressure holding-bleeding button, flexible hose

Range: 0-15psi, 0-30psi, 0-60psi, 0-100psi, 0-160psi, available for bar, kg/cm², kpa etc

Accuracy: ANSI B40.1 Grade B

Suitable for any passenger vehicles.



◀ 20HBR100

Dial tire pressure gauge with hose

Dial: 2"

Steel case and ring, acrylic window, pressure holding-bleeding button, flexible hose, 360° swivel angle chuck

Range: 0-15psi, 0-30psi, 0-60psi, 0-100psi, 0-160psi, available for bar, kg/cm², kpa etc

Accuracy: ANSI B40.1 Grade B

Suitable for any passenger vehicles.



20HBR60





DIAL TIRE PRESSURE GAUGES WITH HOSE



20HBR60G



20HBR60S



20HBR60R

20HBR series with rubber gauge protector



20HBD60



20HBD160S



20HBD75R



20HBD160B



Heavy duty dial tire pressure gauge with hose

Dial: 2"

Steel case and ring, acrylic window, heavy duty zinc alloy dual chuck, pressure holding-bleeding button, flexible hose

Range: 0-60psi, 0-75psi, 0-100psi, available for bar, kg/cm², kpa etc

Accuracy: ANSI B40.1 Grade B

Rubber gauge protector for option

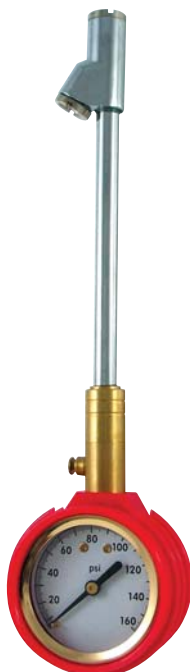
Suitable for any passenger vehicles, cars, trucks, suv, etc



◀ DIAL TIRE PRESSURE GAUGES WITH HOSE



◀ 20SBL160S



20SBL160R



20SBL160B

Heavy duty dial tire pressure gauge with extended length dual foot chuck

Dial: 2"

Steel case and ring, acrylic window, heavy duty zinc alloy dual chuck, 360° swivel angle chuck, pressure holding-bleeding button

Range: 0-60psi, 0-75psi, 0-100psi, 0-160psi, available for bar, kg/cm², kpa etc

Accuracy: ANSI B40.1 Grade B

20SBL160S with black smooth rubber gauge protector

20SBL160R with red rugged rubber gauge protector

20SBL160B with black rugged rubber gauge protector

Suitable for any passenger vehicles, cars, truck, SUV, etc



◀ 20HBY60

Dial tire pressure gauge with hose
Dial: 2"

Steel case and ring, acrylic window, right angle chuck, pressure holding-bleeding button, flexible hose

Range: 0-60psi, 0-75psi, 0-100psi, available for bar, kg/cm², kpa etc

Accuracy: ANSI B40.1 Grade B

Suitable for any passenger vehicles.



◀ 20HAC100G

Dial tire pressure gauge with hose
Dial: 2"

Steel case and gold ring, acrylic window, right angle chuck, pressure holding-bleeding button, flexible hose, clip gauge to tire and read pressure, brass inside and connection

Link with air compressor to inflate

Range: 0-60psi, 0-100psi, available for bar, kg/cm², kpa etc

For use with home or gas station, air compressor





DIAL TIRE PRESSURE GAUGES WITH HOSE



20HB30SF



20HBR30SF



20HBC160SF

Vibration proof dial tire pressure gauge with hose

Dial: 2"

Stainless steel case and crimped ring, polycarbonate window, brass inside and connection

Model: 20HB30SF straight chuck, pressure holding-bleeding button, flexible hose

Model: 20HBR30SF 360° swivel angle chuck, pressure holding-bleeding button, flexible hose

Model: 20HBC160SF straight chuck, pressure holding-bleeding button, clip on chuck

Range: 0-15psi, 0-30psi, 0-60psi, 0-75psi, 0-100psi, 0-160psi, available for bar, kg/cm², kpa etc

Accuracy: ANSI B40.1 Grade B

Liquid filled: glycerin or silicone oil for vibration proof

Smooth rubber gauge protector

Suitable for any passenger vehicles.



25H170M

Dial tire pressure gauge with hose

Dial: 2.5"

Black ABS case, clear snap on acrylic window

Straight chuck, Flexible hose

Range: 0-60psi, 100psi, 160psi, 170psi, available for bar, kg/cm², kpa etc

Accuracy: EN 837 1.6%

Gear style rubber gauge protector

Suitable for any passenger vehicles



25HB170M

Dial tire pressure gauge with hose

Dial: 2.5"

Black ABS case, clear snap on acrylic window

Straight chuck, Pressure holding-bleeding button, Flexible hose

Range: 0-60psi, 100psi, 160psi, 170psi, available for bar, kg/cm², kpa etc

Accuracy: EN 837 1.6%

Gear style rubber gauge protector

Suitable for any passenger vehicles



◀ DIAL TIRE PRESSURE GAUGES WITH HOSE



◀ 25H170G

Dial tire pressure gauge with hose
Dial: 2.5"
Black ABS case, clear snap on acrylic window
Straight chuck, Flexible hose
Range: 0-60psi, 100psi, 160psi, 170psi, available for bar, kg/cm², kpa etc
Accuracy: EN 837 1.6%
Gear style rubber gauge protector with hook hole
Suitable for any passenger vehicles



◀ 25HB170G

Dial tire pressure gauge with hose
Dial: 2.5"
Black ABS case, clear snap on acrylic window
Straight chuck, Pressure holding-bleeding button, Flexible hose
Range: 0-60psi, 100psi, 160psi, 170psi, available for bar, kg/cm², kpa etc
Accuracy: EN 837 1.6%
Gear style rubber gauge protector with hook hole
Suitable for any passenger vehicles



◀ 25HD170G

Heavy duty dial tire pressure gauge with hose
Dial: 2.5"
Black ABS case, clear snap on acrylic window
Heavy duty zinc alloy dual foot chuck, Flexible hose
Range: 0-60psi, 100psi, 160psi, 170psi, available for bar, kg/cm², kpa etc
Accuracy: EN 837 1.6%
Gear style rubber gauge protector with hook hole
Suitable for any passenger vehicles, cars, truck, SUV, etc



◀ 25HBD170G

Heavy duty dial tire pressure gauge with hose
Dial: 2.5"
Black ABS case, clear snap on acrylic window
Heavy duty zinc alloy dual foot chuck, Pressure holding-bleeding button, Flexible hose
Range: 0-60psi, 100psi, 160psi, 170psi, available for bar, kg/cm², kpa etc
Accuracy: EN 837 1.6%
Gear style rubber gauge protector with hook hole
Suitable for any passenger vehicles, cars, truck, SUV, etc





DIAL TIRE PRESSURE GAUGES WITH HOSE



40HBC40G

Dial tire pressure gauge with hose
Dial: 4"
Black steel case and ring, glass window
Straight chuck, pressure holding-bleeding button, flexible hose, clip on chuck
Range: 0-40psi, 0-60psi, 0-100psi, 0-160psi, available for bar, kg/cm², kpa etc
Accuracy: EN 837 1.6%
Gear type black rubber gauge protector
Suitable for any passenger vehicles.



40HBD40G

Dial tire pressure gauge with hose
Dial: 4"
Black steel case and ring, glass window
Straight chuck, pressure holding-bleeding button, flexible hose, Heavy duty zinc alloy dual foot chuck,
Range: 0-40psi, 0-60psi, 0-100psi, 0-160psi, available for bar, kg/cm², kpa etc
Accuracy: EN 837 1.6%
Gear type black rubber gauge protector
Suitable for any passenger vehicles, cars, truck, SUV, etc



40ABC35

Dial tire pressure test gauge
Dial: 4"
304 SS case and bayonet ring, toughened glass window
Brass inside and connection,
Aluminum big handle, pressure holding-bleeding button, flexible hose
40ABD35: Heavy duty zinc alloy dual foot chuck
40ABC35: Clip on chuck
Range: 0-2.5bar, 4bar, 10bar, available for psi, kg/cm², kpa etc
Accuracy: EN 837 1.0%
Liquid fillable for damping and vibration proof
Suitable for any passenger vehicles, cars, truck, SUV, etc

40ABD35



◀ PEN TIRE PRESSURE GAUGES



PTG8001

Aluminun body, zinc alloy head
4 side plastic bar
Range: 10-50psi, 10-100psi, available with bar, kg/cm², kpa
Body color: white, silver, black, blue, green, yellow, red etc



PTG8002

Copper body, zinc alloy head
2 side plastic bar
Range: 10-50psi, 10-100psi, available with bar, kg/cm², kpa
Body color: Silver



PTG8003

Copper body, zinc alloy head
2 side plastic bar
Range: 10-50psi, 10-100psi, available with bar, kg/cm², kpa
Body color: Silver



PTG8004

Copper body, zinc alloy
4 side plastic bar
Range: 10-50psi, 10-100psi, available with bar, kg/cm², kpa
Body color: Silver





PEN TIRE PRESSURE GAUGES



PTG8005

Copper body and chrome plated plastic head
2 side plastic bar
Range: 10-50psi, 10-100psi, available with bar, kg/cm², kpa
Body color: Silver



PTG8006

Copper body, zinc alloy dual foot heavy duty head
4 side plastic bar
Range: 10-120psi, available with bar, kg/cm², kpa
Body color: Silver



PTG8007

Copper body, zinc alloy dual foot heavy duty head
4 side plastic bar
Range: 10-120psi, available with bar, kg/cm², kpa
Body color: Silver



PTG8008

Copper body, zinc alloy extended length dual foot heavy
duty head
4 side plastic bar
Range: 10-120psi, 10-50psi, available with bar, kg/cm², kpa
Body color: silver



◀ PEN TIRE PRESSURE GAUGES



◀ PTG8009

Copper body, zinc alloy dual foot heavy duty head
Aluminum round bar
With plastic core remover cap
Range: 10-160psi



◀ PTG8012

Copper body, zinc alloy head
2 side plastic bar
Range: 10-50psi, 10-100psi, available with bar, kg/cm², kpa
Body color: Silver



◀ PTG8010

Chrome plated brass body
Chrome plated zinc alloy dual foot heavy duty head
Metal hook
2 side plastic or metal bar
Range: 10-150psi, available with bar, kg/cm², kpa
Body color: silver



◀ PTG8011

Chrome plated brass body
Chrome plated zinc alloy extended length dual foot heavy duty head
Metal hook
2 side plastic or metal bar
Range: 10-150psi, available with bar, kg/cm², kpa
Body color: silver





DT6001

Mini digital tire gauge with key chain
Body material: ABS
Key chain for promotion
LCD digital display, automatic On/Off
Range: 5-100psi, bar, kpa, kg/cm²
CE approval, Accuracy: +/-1%
1 new 3V battery, 2 years' life
Suitable for any passenger vehicles



DT6002

Digital tire gauge
Body material: ABS
LCD digital display, automatic On/Off
Range: 5-100psi, bar, kpa, kg/cm²
CE approval, Accuracy: +/-1%
1 new 3V battery, 2 years' life
Suitable for any passenger vehicles



DT6003

Digital tire gauge
Body material: ABS, black, red, blue, yellow color available
Easy grip handle
LCD digital display, automatic On/Off
Range: 5-100psi, bar, kpa, kg/cm²
CE approval, Accuracy: +/-1%
1 new 3V battery, 2 years' life
Suitable for any passenger vehicles



DT6004

Digital tire gauge
Body material: ABS
Easy grip handle
LCD digital display, automatic On/Off
Range: 5-100psi, bar, kpa, kg/cm²
CE approval, Accuracy: +/-1%
1 new 3V battery, 2 years' life
Suitable for any passenger vehicles



◀ DIGITAL TIRE PRESSURE GAUGES



DT6005

Digital tire gauge with back light
Body material: ABS
LCD digital display, automatic On/Off
Extra large LCD display with back light
Range: 5-100psi, bar, kpa, kg/cm²
CE approval, Accuracy: +/-1%
Replaceable batteries, 5 new batteries, 2 years' life
Suitable for any passenger vehicles, etc



DT6006

Digital tire gauge with back light
Body material: ABS
LCD digital display, automatic On/Off
Push button with back light and change pressure unit
Range: 5-100psi, bar, kpa, kg/cm²
CE approval, Accuracy: +/-1%
Replaceable batteries, 5 new batteries, 2 years' life
Suitable for any passenger vehicles



DT6007

Digital tire gauge
Body material: ABS
LCD digital display, automatic On/Off
Push button to read pressure and change pressure unit
Range: 5-100psi, bar, kpa, kg/cm²
CE approval, Accuracy: +/-1%
Replaceable battery, 1 new 3V battery, 2 years' life
Suitable for any passenger vehicles



DT6008

2 IN 1 Digital Tire Gauge
Check Tire Pressure
Unit Change for PSI, BAR or KPa
Range : 5-160PSI or 0.5-11.0BAR or 50-110KPa
Check Tire Tread Depth, Accuracy: +/- 0.3mm
Available Colors: Silver and Black
Suitable for any passenger vehicles





DIGITAL TIRE PRESSURE GAUGES



DT6009

Deluxe Digital Tire Gauge with Ice Scraper
Range: 5-100PSI or 0.5-7 Bar or 50-700kpa
Extra Large Lcd Display with Bright Back Light
Built-in LED Flash Light
Solid Ice Scraper
Good Feeling Grip-handle
Replaceable Battery
Suitable for any passenger vehicles



DT6010

Solar Digital Tire Gauge
Two Way Power (solar, Lithium)
Measure Tire Tread Depth
Unit Change for PSI, BAR or Kpa
Range: 5-160PSI or 0.5-11.0BAR or 50-110Kpa
Available Colors: Silver, Black and Red
Suitable for any passenger vehicles



DT6011

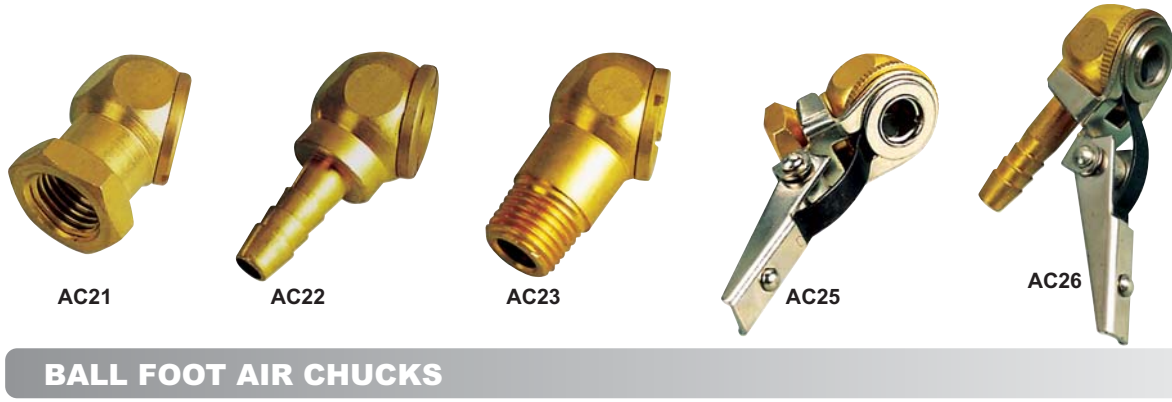
Digital tire gauge with back light
Body material: ABS
LCD digital display, automatic On/Off
Push button with back light and change pressure unit
Range: 5-100psi, bar, kpa, kg/cm²
CE approval, Accuracy: +/-1%
Replaceable batteries, 5 new batteries, 2 years' life
Suitable for any passenger vehicles



DT6012

5 IN 1 Digital tire gauge
LCD Digital Tire Pressure Readout
Unit Change for PSI, BAR, kg/cm²
Range: 5-160PSI or 0.5-11.0BAR or 0.5-11.0kg/cm²
or 50-110Kpa
Emergency Glass Shatter Hammer
Emergency Seat Belt Cutter Knife
Super-Bright LED Light
Tire Tread Depth Gauge
Suitable for any passenger vehicles







QC01



QC02



QC03

QUICK COUPLER

QC01: 1/4" Male x Male

QC02: 1/4" Male x Nitto Style

QC03: 1/4" Male x Milton Style



TDG1



TDG2

TREAD DEPTH GAUGE

TDG1: 6 sides bar, with black and red marking

TDG2: 6 sides bar, with green, yellow and red zone

TDG3: Dial type tire tread Depth Gauge



TDG3





TGP01

Tire gauge package
Suitable for pen tire pressure gauges



TGP05

Tire gauge package
Suitable for 1.5" dial tire pressure gauges 15SB60



TGP02

TGP03

TGP04

Tire gauge package
Suitable for 2" dial tire pressure gauges





INFORMATION

Why is the proper tire inflation important?

Tires are probably the most overlooked part of vehicle maintenance, yet very important for operation.

Under-inflation can:

- reduce the useful life of tires by causing the tire to wear more quickly
- cause increased temperature in tires resulting in tire damage
- hurt fuel economy due to increased rolling resistance
- negatively affect handling
- decrease tire carrying capacity, and create an overload on tires

The most common cause of tire failure is under-inflation.

According to the National Highway Traffic Safety Administration (NHTSA), and under-inflation may influence automobile accidents by contributing to:

- skidding and/or a loss of control in a curve, like an off-ramp maneuver coming off of a highway at high speed, or simply taking a curve at high speed
- skidding and/or loss of control in a lane change maneuver
- hydroplaning on a wet surface, which can affect both stopping distance and skidding and/or loss of control
- increased in stopping distance
- flat tires and blowouts
- overloading the vehicle

How do I determine the correct pressure for my tires?

The correct air pressure for your tires should be shown on the vehicle door edge or post, glove box door or fuel door. It should also be listed in your owner's manual. If you cannot find this information, contact the vehicle manufacturer.

The pressure listed is for "cold inflation pressure", which is the pressure in a tire that has not been driven for at least three hours. As tires warm during driving, it is normal for pressure to increase. Never reduce air pressure when tires are hot.

Inflate tires according to the vehicle manufacturer's recommendations, not the maximum pressure listed on the sidewall. You should never exceed this maximum pressure.

How often should the tire pressure be checked?

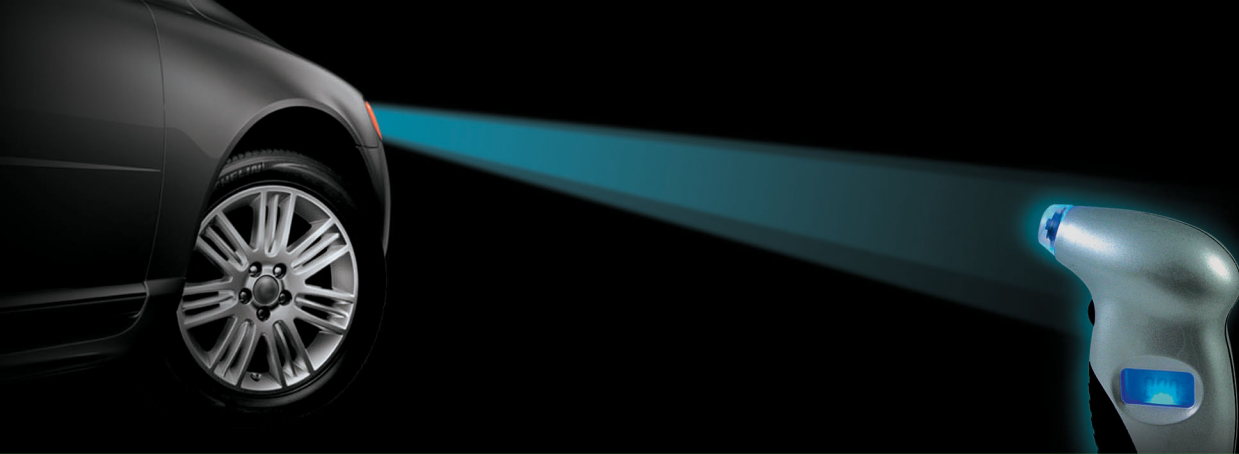
Tires can lose 1 psi per month under normal conditions. Tires also can lose 1 psi for every 10°F temperature drop.

Check tire pressure at least once a month and before going on a long trip. Also, don't forget to check the spare tire to ensure that it's properly inflated and ready if needed.

Air pressure should be checked when tires are cold. Inflation pressure can increase several pounds during a long trip in hot weather.

When checking tire pressure, also inspect tires for uneven tread wear, cracks, foreign objects, or other signs of wear or damage. All tire valves should have valve caps.

Check the air pressure with your own gauge. Some air pressure towers at service stations are inaccurate because of exposure and abuse. Also, do not check pressure by just looking at the tire. A tire can be under inflated by 10 pounds and not appear to be low.



GOOD-SAGE



RIISING INSTRUMENT CO.,LTD.

TEL: 86-574-87787718 / 87787728

FAX: 86-574-87787708

E-mail: sales@tire-gauge.com

www.tire-gauge.com